

Fun.Cam

CONCORD  Fun.Cam

User's Guide



www.concordcam.com

Table of Contents

Important Precautions.....	2
General Precautions	3
THE CAMERA	4
SOFTWARE INSTALLATION	6
CAMERA OPERATION	7
Important battery information	7
BATTERY INSTALLATION GUIDE	8
Power up the camera.....	8
OPERATING MODES	9
<i>Image Resolution Settings</i>	9
<i>Image Quality Settings</i>	9
<i>Flash settings</i>	9
<i>Anti-flickering settings</i>	10
<i>Capture Modes</i>	10
<i>Erase Modes</i>	11
ERROR CONDITIONS	12
Incorrect Exposure	12
Battery Low.....	12
Image memory full	12
TRANSFERRING PICTURES	13
Connecting the camera to your PC	13
How to start the TWAIN driver.....	14
VIDEO CLIPS	16
Creating Video Clips	16
WEB CAMERA	17
Web Camera Operation	17
GETTING HELP	18
CAMERA SPECIFICATIONS	19
WARRANTY INFORMATION	21

Important Precautions

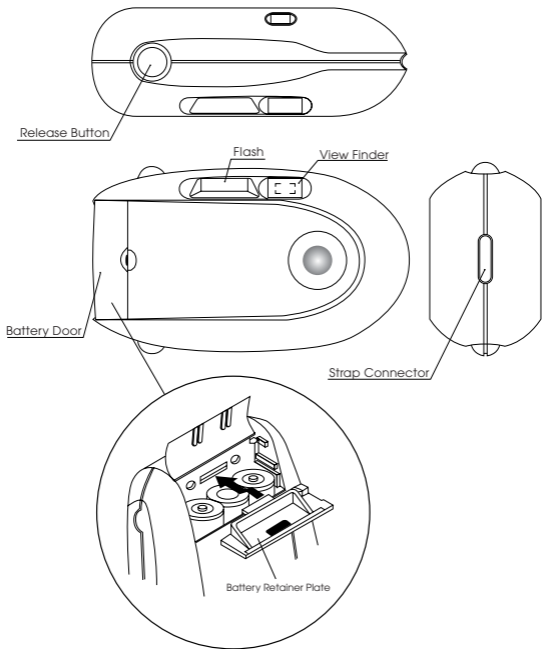
Before using the camera and the software please take note of the following precautions.

- 1) Make sure to install the software before connecting the camera for the first time to your computer. Failing to do so will cause image transfer problems. Please make sure you follow the software installation steps in this manual.
- 2) Do not remove the batteries otherwise pictures in the camera will be lost.
- 3) Always switch off the camera before removing batteries.
- 4) The camera will retain images for around a minute after the batteries are removed. If you need to replace the batteries please do so within this period of time, otherwise; images will be lost.
- 5) If your computer hangs during image transfer, please follow these steps:
 - a. Disconnect camera from the computer.
 - b. Wait for the camera to switch off. This may take up to 45 seconds.
 - c. Reboot your computer and wait for it to completely reboot.
 - d. Connect the camera to the computer and transfer again.
- 6) You should transfer the images from the camera to your computer as soon as possible when the batteries are low in order to avoid losing images.
- 7) The camera consumes battery power even when switched off. It is therefore recommended that you remove the batteries after you have transferred the images and when the camera is not in use.

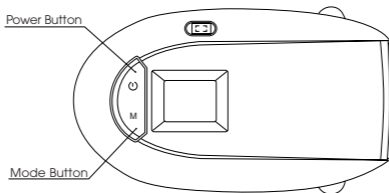
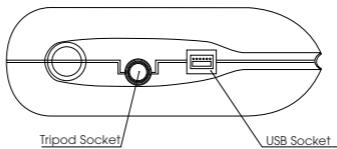
General Precautions

- 1) Never try to take pictures when operating a motor vehicle or while walking.
- 2) Never try to open the case of the camera or attempt your own repairs. Always leave service to authorized repair facilities.
- 3) Keep the camera away from water and other liquids and never let it get wet. Never use when it is raining or snowing.
- 4) Should foreign matter or water get into the unit, immediately turn the power off and contact your local authorized service center.
- 5) Physical damage and malfunction of this unit can cause the image data stored in its memory to be deleted. Be sure to always keep backup copies of data by transferring them to your computer.
- 6) Do not leave the camera in places subject to extremely high temperatures such as a sealed vehicle or in direct sunlight.
- 7) Remove the batteries when the camera is not used for long periods of time. Before doing so please make sure all images in the camera are transferred to your computer.
- 8) Do not place the camera in unstable locations such as a sloping surface or unstable table where the camera may fall.
- 9) Do not touch or press on the display or lens.
- 10) Do not drop the camera or subject the camera to strong vibrations.

THE CAMERA



THE CAMERA



SOFTWARE INSTALLATION

This section shows you how to install the application software and the drivers required. Please follow the step-by-step instructions. ***Do not connect the camera to the PC until told otherwise during the installation process.***

- 1) Insert the CD into the CD-ROM drive of your computer.
- 2) If you have the Auto Run feature enabled for your CD-ROM, the setup application will start automatically.
- 3) If you don't have the Auto Run feature enabled, click on **Start** and select **Run...** from the Windows taskbar. Type **d:/launch** to launch the software installer (**d:** refers to your CD-ROM drive. If your CD-ROM drive is not drive **d:**, use the drive letter of your CD-ROM drive instead).
- 4) There are three options in the installer:
 - a) Install Arcsoft (imaging applications)
 - b) Install Driver (plug and play drivers)
 - c) Install Twain Driver
- 5) You can install all the different options one by one by clicking on the required option. The plug and play drivers and the twain driver **MUST** be installed in order to transfer images.
- 6) Make sure that you have installed the driver in "4b" above and plug the camera into the USB port of your PC. A USB cable is provided for this connection.
- 7) Once the camera is plugged into the PC, a dialog box titled **New Hardware Found** will be displayed. **DynaVision DC3500 DSC** and **DynaVision DC3500 PC CAM** will be identified and installed automatically.

CAMERA OPERATION

Important battery information

The Eye-Q fun.cam camera uses a type of memory that continually draws power to retain the pictures in the camera's internal memory even if the camera is powered off. If the battery power is depleted and you have not transferred your images to the computer, you will lose them. It is strongly recommended that you transfer your images to the computer promptly and then remove the batteries to extend their life.

If you have not transferred your pictures to your computer and you receive a battery low warning, change the batteries immediately and swiftly. The camera will retain images for around one minute after the batteries are removed. Failure to replace the batteries will result in the loss of your images.

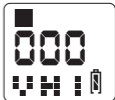
Always use fresh batteries to optimize the performance of your camera.

BATTERY INSTALLATION GUIDE

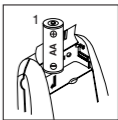
Power up the camera

Insert three AA-size batteries into the battery compartment. Please make sure they are inserted into the camera following the polarity marked in the battery compartment and that they are inserted in the sequence shown in the diagram. We recommend alkaline batteries for better performance.

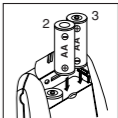
Press and hold the power button for around one second and the camera should turn on with a double-beep sound. The LCD panel will display the default screen. Press and hold the power button again to turn off the camera.



The power-up default settings are single capture, VGA (640x480) image resolution, high image quality and flash off. The 3-digit counter on the LCD indicates the number of pictures stored in the camera. Simply click the shutter button to take a picture. The camera will emit a high tone double-beep and the counter will increase when a picture is taken successfully.



The camera will switch itself off if it is idle for more than 45 seconds in order to save power. The camera will emit a double-beep sound before switching itself off.



Warning:

- ***Do not remove the batteries otherwise pictures in the camera will be lost.***
- ***Always turn the camera off before removing the batteries.***
- ***The camera will retain images for around one minute after the batteries are removed. Failure to replace the batteries within this time frame will result in the loss of your images.***



OPERATING MODES

You can select the operating mode by pressing the mode button repeatedly until the desired mode is reached and then press the shutter button to confirm. The LCD will cycle through the following modes one by one each time the mode button is pressed. The camera will abort selection if no button is pressed within 10 seconds.

Image Resolution Settings

1. VGA (640x480) image resolution. Images at this resolution are perfect for viewing on an 800x600 monitor resolution setting.
2. QVGA (320x240) image resolution. Images taken in this resolution use less memory (more pictures can therefore be taken). However, the pictures may look grainy and pixelated. This setting is ideal for passport type photos.



Image Quality Settings

3. High image quality setting. In this setting, the picture quality is the highest and you can take up to 22 pictures in VGA resolution (or up to 72 in QVGA resolution).
4. Normal image quality setting. In this setting, the picture quality is still very good and you can take up to 49 pictures in VGA resolution (or up to 144 in QVGA resolution).
5. Low Image quality setting. In this setting the picture quality is not as high as the other two settings. However, you can take up to 74 pictures in VGA resolution (or up to 180 in QVGA resolution).



OPERATING MODES

Flash settings

- 6a. You can press the shutter button to enter automatic flash mode when you see this display. The flash icon will blink until the flash is fully charged. In this mode, the flash will fire automatically when you take a picture under low light conditions.
- 6b. To disable the automatic flash, press the Shutter button when you see the screen in the LCD. The flash icon will be switched off if you select this mode.



Anti-flickering settings

7. In this mode, the camera will minimize the picture bandings caused by 60Hz fluorescent lighting (in countries such as USA and Japan).
8. In this mode, the camera will minimize the picture bandings caused by 50Hz fluorescent lighting (in countries such as UK and Australia).



Capture Modes

9. Single capture mode. In this mode, the camera will take one picture per shutter click.
10. Continuous capture mode. In this mode, the camera will take pictures continuously once the shutter button is pressed. Press the shutter button again to stop taking pictures. The flash will be disabled in this mode.
11. Self-timer mode. In this mode, the camera will take a picture 10 seconds after the shutter button is pressed. While the timer is running, the camera will emit 8 seconds of slow beeps followed by 2 seconds of fast beeps.



OPERATING MODES

12. Self-timer continuous capture mode. In this mode, the camera will take pictures continuously 10 seconds after the shutter button is pressed. Press the shutter button again to stop taking pictures. While the timer is running, the camera will emit 8 seconds of slow beeps followed by 2 seconds of fast beeps. The flash will be disabled in this mode.



Erase Modes

13. You can press the shutter button to erase the last taken picture when you see this display.
14. You can press the shutter button to erase all the pictures in the camera when you see this display.



ERROR CONDITIONS

Incorrect Exposure

If exposure is under or over, the camera will emit a low tone error sound when the shutter is pressed. The camera will not take pictures under these conditions. Please note that this also applies in the self-timer mode. The camera will not start continuous capture or self-timer continuous capture if the exposure is wrong. However, once the continuous capture is started, the camera will take pictures regardless of the lighting conditions. Pay special attention to the light conditions while in this mode to optimize image quality.

Battery Low

When the battery is running low, the camera will emit a long high tone beep. It will also switch on the battery low icon as shown on the right. Under this condition the camera will not allow any operation apart from power down. Pressing the mode or the shutter button under this condition will give a low tone error sound. ***You should transfer images from the camera to your computer immediately in order to avoid image loss.***



Image memory full

If the image memory is full, the camera will emit a low tone error sound when the shutter is pressed. The camera will not take pictures under this condition and the counter on the LCD will display "Full" as shown on the left.



TRANSFERRING PICTURES

Connecting the camera to your PC

The camera provides a USB interface for connection to a PC. Please turn on your PC and connect the camera to your PC using the USB cable provided. The counter should display "PC_" as shown on the left when the camera is connected.



You can now transfer images from the camera to your PC or you can use the camera as a PC Web Camera. Please refer to the PC camera section for details. The camera will switch itself off automatically once it is disconnected from the computer.

You should not connect the camera until the drivers have been installed.

TRANSFERRING PICTURES

How to start the TWAIN driver

A TWAIN driver is provided for transferring pictures in the camera to your PC. The TWAIN driver can be activated in one of the following ways depending on which Arcsoft application you are using. If you are using other imaging applications, please refer to their manuals on how to start the TWAIN driver.

In Fun House

- 1) Click the **Get Template** icon and select the background template
- 2) Click the **Get Photo** icon
- 3) Click the **Acquire** (camera) icon
- 3) Select source **Eye-Q fun.cam**

In PhotoPrinter

- 1) Click the **Get Photo** icon
- 2) Click the **Acquire Photo** (camera) icon
- 3) Select source **Eye-Q fun.cam**

In PhotoBase

- 1) Click the **Acquire** (camera/scanner) icon
- 2) Select source **Eye-Q fun.cam**

How to use the TWAIN driver



TRANSFERRING PICTURES

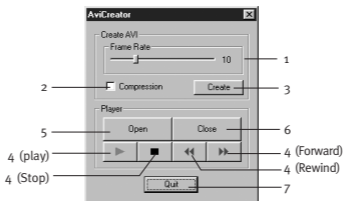
Please follow the steps below to transfer pictures from the camera to your PC imaging application:

- 1) The camera will transfer pictures into the thumbnails once the TWAIN driver is started. The camera icon will blink whenever there is interaction between the camera and your PC.
- 2) You can preview the pictures in thumbnails. If more than 20 pictures are transferred, click the **Page Up** or **Page Down** button to go to the thumbnail page that you need.
- 3) You can select pictures to transfer from the thumbnails as follows:
 - a. To select a picture to transfer, simply click on its thumbnail. The thumbnail of the selected picture will be highlighted.
 - b. To select all pictures, simply click the **Select All** button.
 - c. To select multiple pictures, press and hold the **Ctrl** key and click at the same time on the thumbnail of the required picture. Repeat this until you select all the pictures that you need.
 - d. To select a range of pictures, click on the thumbnail of the first picture that you need, then press and hold the **Shift** key and click at the same time on the thumbnail of the last picture that you need.
- 4) After selecting the pictures, click the **Capture** button to start transferring pictures to your PC imaging application.
- 5) To make a video clip in AVI format, click the **AVI** button. The following section will provide more details.
- 6) If you need help on the usage of the TWAIN driver, click on the **Help** button.
- 7) If you want to exit the TWAIN driver, click the **Exit** Button.

VIDEO CLIPS

Creating video clips

Click the AVI button in the TWAIN driver, you will see the following window. Follow the steps below to create a video clip.



- 1) Set the Frame Rate in frames per second using this slide bar. This will determine the play speed of the video clip.
- 2) Check the Compression box if you need a small file size for your video clip. Please note that the quality of the compressed video will be lower as compared to that of the non-compressed video.
- 3) Click the Create button, then select directory, enter filename and click on the save button in the dialog box. An AVI video clip will then be generated automatically.
- 4) When the video clip screen appears click on open in the AVI creator dialog box and simply use the Play, Stop, Forward and Rewind buttons to play the video clip.
- 5) You can also open an existing AVI format video clip for review. Click on the Open button and select the AVI file you want to open and click on the Open button in the Open dialog box.
- 6) Close the current AVI file once you finish reviewing it.
- 7) Click on the Quit button to exit from the video clip window.

WEB CAMERA

Web Camera Operation

The camera can be used as a web camera for video capture via the USB port. You can use software such as Microsoft AMCAP (not included) for this purpose. The camera can also be used with software such as Microsoft NetMeeting for video conferencing purpose. NetMeeting is software that comes standard with Windows 98. Please refer to the software manuals for detail of how to use this software.

GETTING HELP

If you need help with your camera, refer to the Troubleshooting section of this manual. If you still cannot find the solution, visit our Web site at **www.support.concordcam.com**. Most support issues are answered in the Frequently Asked Questions (FAQ) section.

Toll Free in the US and Canada:

- (866) 522-6372

Toll Free in Europe:

- UK: 0800-1696482
- Germany: 0800-1800563
- France: 0800-917599
- Spain: 900-973195
- Italy: 800-781883

Toll:

- 31-53-4829779

For Software Technical Support, please contact:

In the USA and Canada:

ArcSoft, Inc.

46601 Fremont Blvd.

Fremont, CA 94538

Monday – Friday

8:30AM - 5:30PM (PST)

Tel: (510) 440-9901 Fax: (510) 440-1270

E-mail: support@arcsoft.com

Web: www.arcsoft.com

In Europe:

Arcsoft, Inc.

Unit, Shannon Industrial

Estate

Shannon, Co. Clare, Ireland

Tel: +353 (0) 61 702087 Fax: +353 (0) 61 702001

E-mail: europe@arcsoft.com

CAMERA SPECIFICATION

Lens	4-element aspheric hybrid lens with IR filter
Focusing	Focus free 0.6m to infinity
Image sensor	VGA (640 x 480 pixel) CMOS sensor
Image quality & typical number of images	High Quality - 640 x 480, (22) or 320 x 240 (72) Normal Quality - 640 x 480 (49) or 320 x 240 (144) Low Quality - 640x480 (74) or 320 x 240 (180)
Image resolution	640 x 480, 24-bit color depth 324 x 240, 24-bit color depth
Sensitivity	Equivalent to ~ ISO100 Silver Halide Film
Exposure	Auto exposure, Auto white balance
Storage	8 MB Internal memory (SDRAM)
Output file format	JPEG
Shutter	Electronic variable speed
Viewfinder	Optical viewfinder
Shooting modes	Single image capture, Continuous capture (2FPS), Fluorescent lighting system setting (50Hz/60Hz), 10 second self-timer, PC camera
Status LCD	Yes
Frame counter	LCD counter
Flash unit	Auto flash and flash-off mode
Power source	3xAA Batteries
Battery life	Up to 200 pictures (50% with flash)

CAMERA SPECIFICATION

Power management	Auto-power-off after 45 seconds without activity
Size	110mm W x 61mm H x 37mm D (4.33 x 2.40 x 1.46 inches)
Weight	95 Grams (3.4 Oz) - without batteries
PC camera video	2 FPS in VGA resolution 10 FPS in CIF resolution
Connectivity	USB connector direct to PC
Min. system requirements	Windows 98/ME/2000/XP, Pentium PC with USB port
PC software	Arcsoft imaging software and TWAIN driver with AVI video clip generator
Accessories	CD ROM including Image editing software and drivers USB cable Hand strap 3xAA alkaline battery Warranty card User guide

WARRANTY INFORMATION

This device complies with Part 15 of the FCC Rules. Operation is subject to the following two conditions: (1) This device may not cause harmful interference, and (2) This device must accept any interference received, including interference that may cause undesired operation.

Warning: Changes or modifications to this unit not expressly approved by the party responsible for compliance could void the user's authority to operate the equipment.

Note: This equipment has been tested and found to comply with the limits for a Class B digital device, pursuant to Part 15 of the FCC Rules. These limits are designed to provide reasonable protection against harmful interference in a residential installation. This equipment generates, uses and can radiate radio frequency energy and, if not installed and used in accordance with the instruction, may cause harmful interference to radio communications.

There is no guarantee that interference will not occur in a particular installation. If this equipment does cause harmful interference to radio or television reception, which can be determined by turning the equipment off and on, the user is encouraged to try to correct the interference by one or more of the following measures:

- Reorient or relocate the receiving antenna.
- Increase the separation between the equipment and receiver.
- Connect the equipment into an outlet on a circuit different from that to which the receiver is needed.
- Consult the dealer or an experienced radio/TV technician for help.

Technical Support Hot Line:

Toll Free In the USA & Canada

1-866-522-6372

Toll Free In Europe

UK: 0800-169-6482

BELGIUM: 0800-787-57

FRANCE: 0800-917-599

GERMANY: 0800-1800-563

SPAIN: 900-973-195

ITALY: 800-781-883

All Other Countries - Toll

31-53-482-9779

WARRANTY INFORMATION

LIMITED WARRANTY

The manufacturer warrants your Concord Eye-Q fun.cam camera for a period of 1 year from the date of purchase to be free from defects in material and workmanship. The warranty period shall be extended accordingly if applicable mandatory legislation in effect on the date of purchase requires a longer warranty period. The manufacturer, at its option, will repair or replace or have repaired or replaced, at a location selected by the manufacturer, each product which is proven to the satisfaction of the manufacturer to be defective in material or workmanship. This warranty shall be limited to the camera for defects which were not caused by misuse, abuse, improper handling, tampering or attempts to repair by the owner or any unauthorized repair service or repair man. This warranty is limited solely to the above and applies only for the period set forth. We will not be liable for any loss or damage, incidental or consequential of any kind, whether based on warranty, contract or negligence arising in connection with the sale, use or repair of the product. Our maximum liability shall not in any case exceed the sale price. This warranty is for the benefit of the original purchaser only. This warranty gives you specific legal rights and may vary from jurisdiction to jurisdiction. The manufacturer makes no representation or warranties with regard to the contents of the User's Guide and Quick Start Guide. Non-Concord brand equipment and software and the Concord fun.cam Too TWIN driver distributed with your Concord Eye-Q fun.cam camera are sold "as is" and without warranty of any kind from Concord, including any implied warranty regarding merchantability, fitness for a particular purpose, and non-infringement of third party rights, and all such warranties are disclaimed. The sole warranty, if any, for non-Concord branded items, if any, is given by the manufacturer or producer thereof.

Concord, Concord Eye-Q and the Concord Eye-Q logo are registered trademarks or trademarks of Concord Camera Corp., in the United States and/or other countries. Microsoft and Windows are either registered trademarks or trademarks of Microsoft Corporation in the United States and/or other countries. Mac and Macintosh are registered trademarks or trademarks of Apple Computer, Inc. in the U.S. and other countries. All other brands and product names are either registered trademarks or trademarks of their respective owners.